

PAT Early Literacy

2025 trial:

## **PHONICS AND RELATED SKILLS**

Test administration

instructions

## CONTENTS

TRIAL INFORMATION.....	1
Purpose .....	1
Year levels.....	1
Content.....	1
Test administration .....	1
Test assignment.....	1
Results .....	2
Teacher expectations.....	2
PRIOR TO TESTING .....	3
Technical requirements.....	3
ON TESTING DAYS .....	4
Notes .....	4
STARTING THE TEST.....	4
TROUBLESHOOTING .....	8
Why can't my student log in? .....	8
Why is the test not appearing for my student?.....	8
Can I close a student's test if they forget to submit it? .....	8
GENERATING REPORTS .....	9



## TRIAL INFORMATION

### Purpose

This trial is vital to ACER's development of a new PAT early years literacy assessment. Following the trial, statistical analysis will be carried out and this along with feedback from schools will help determine what has worked and can be included in the final assessments. We anticipate that the new assessment will be released in 2026.

### Trial period

The trial period runs from **Monday 2 June** to **Friday 8 August**. Your students will be able to complete the trial test forms at any time between these dates.

### Year levels

This trial is open to students in Foundation, Year 1, and Year 2.

### Content

The trial test forms contain a selection of new content that we need to try out with a similar population to the one that will ultimately sit the final tests, to make sure the content and test functionality works well.

### Test administration

To ensure students receive adequate support during their trial test, we recommend administering the test in groups of 6-10 students where possible.

The suggested time is **30 minutes**. This includes time for practice questions, which appear throughout the test.

Students are encouraged to attempt as many questions as they can, even if this means they skip over some questions.

### Test assignment

ACER is responsible for the assignment of trial test forms to your students. There are a number of trial test forms consisting of different trial questions and only one reading trial test form will be assigned to each of your participating students. Within each year level, students may be assigned a mix of trial test forms.

If you have a student who can no longer participate in the trial, you will be able to unassign the their trial form yourself.

If you've added a new student and would like them to participate, please contact us on [school.support@acer.org](mailto:school.support@acer.org).

## **Results**

Instant raw score reports will be available from within your online school account. Note, however, that the purpose of the trial is to test questions and not students. The reports will only display your students' correct and incorrect responses and the percentage correct within your selected group for each question.

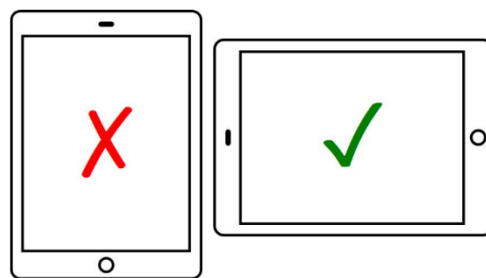
We do not recommend that schools review the trial questions in detail or take students through the answers. In a trial we do not know how the questions will work and we may find that questions are not suitable for inclusion in final tests. It does, however, serve as valuable practice for students and teachers alike and allows schools to have direct input into the makeup of future tests through teacher feedback.

## **Teacher expectations**

After the trial tests have been completed, the teacher who administered the tests is encouraged to complete a post-test feedback survey. The survey will ask for general feedback about the test content, as well as students' experience with the assessment. The link will be provided at the end of the trial period.

## PRIOR TO TESTING

- ☐ Students are highly recommended to complete the test on a **tablet** (eg iPad, Android tablet) as instructions provided by the virtual assistant within the test will refer to tapping, rather than clicking.
- ☐ Tablets should be held in **landscape** orientation (ie, horizontally) at all times. Holding the tablet in portrait mode may prevent key test content from appearing as intended.
- ☐ **iPad minis should not be used**, as their display is too narrow even when held in landscape orientation.
- ☐ Ensure that all students are listed within your school's online assessment account and have been assigned the necessary trial test forms. If you do not have access to the account, check with the staff responsible for this at your school.
- ☐ Schedule your testing date and time. ACER recommends that tests are administered in the morning and not immediately before or after an exciting school event.
- ☐ Run the browser exam from a student computer or device to check whether your school's setup meets the minimum technical requirements. Alternatively, send the technical requirements to your school's IT technician.  
Browser exam: <https://oars.acer.edu.au/browserexam/>



### Technical requirements

- Minimum browser resolution: 1280 width x 800 height
  - Tablet screen size: 10.2"
  - Minimum DSL or cable internet connection: 256 Kbps
  - Compatible computers and devices: PC or laptop, Apple Mac, iPad (not iPad Mini), other tablet devices
  - Compatible web browsers (latest versions): Google Chrome, Mozilla Firefox, Safari, Microsoft Edge
  - The following domains must be whitelisted/permitted by the network firewall or security settings:
    - acer.org/
    - acer.edu.au/
    - delivery.acer.edu.au/
    - delivery2.acer.edu.au/
- ☐ Make note of your school's online assessment login page, or make sure that the page URL is saved on student devices, or available as a link from your school's intranet. The web address will be similar to <https://oars.acer.edu.au/your-school-name>.
  - ☐ Download or print a list of your students' login details. This is completed from the **Students** page within your school's online assessment account.
  - ☐ You may determine that some students require changed testing provisions due to specific learning needs. There is no need to report these accommodations to ACER for the purpose of the technical trial. Please note there are unfortunately no accessible versions of the trial forms available.

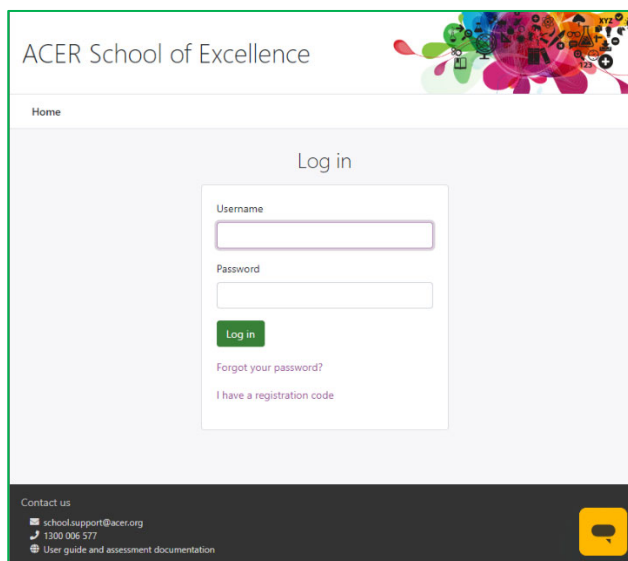
## ON TESTING DAYS

### Notes

- **All students will need headphones** on the day of the test.
- **There are no written directions shown to students at the start of the test.** Students should listen closely to the audio instructions provided by the virtual helper (ie, the animated furry alien) at the start of the test.
- ACER's trial tests should be administered under standard testing conditions with invigilation.
- Students will not be automatically locked out of the tests after the allowed time passes. You must monitor and manage the time, including accommodating toilet breaks or other interruptions that may occur.
- Student responses are automatically saved each time they navigate to another question.
- If technical problems cause the need to postpone the completion of the tests, students may close the browser without losing their progress.

## STARTING THE TEST

Once students are seated at their computers or devices, instruct them to load your school's online assessment login page:



If your students can enter their own username and password, give each student their username and password and ask them to enter this information and then click Log in.

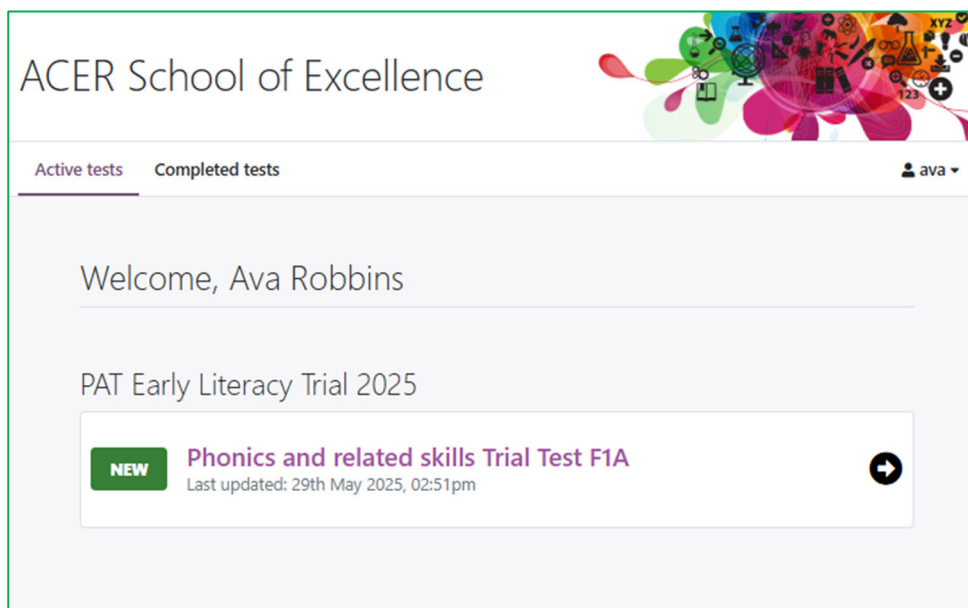
You may need to assist younger students with entering their username and password.

**Please note:** Usernames and passwords are **case sensitive**.

Once students have logged in, say:

*Please follow my instructions and do not click through the screens unless you are told to do so. Please enter the username and password given to you and then click **Log in**.*

Students will see a screen listing all assessments currently assigned to them:



Each student's name will be displayed at the top of the welcome page.

Check that all students are logged in with the correct details.

If your students are able to read their own names, say:

*Please raise your hand if the name at the top of the page is not your own.*

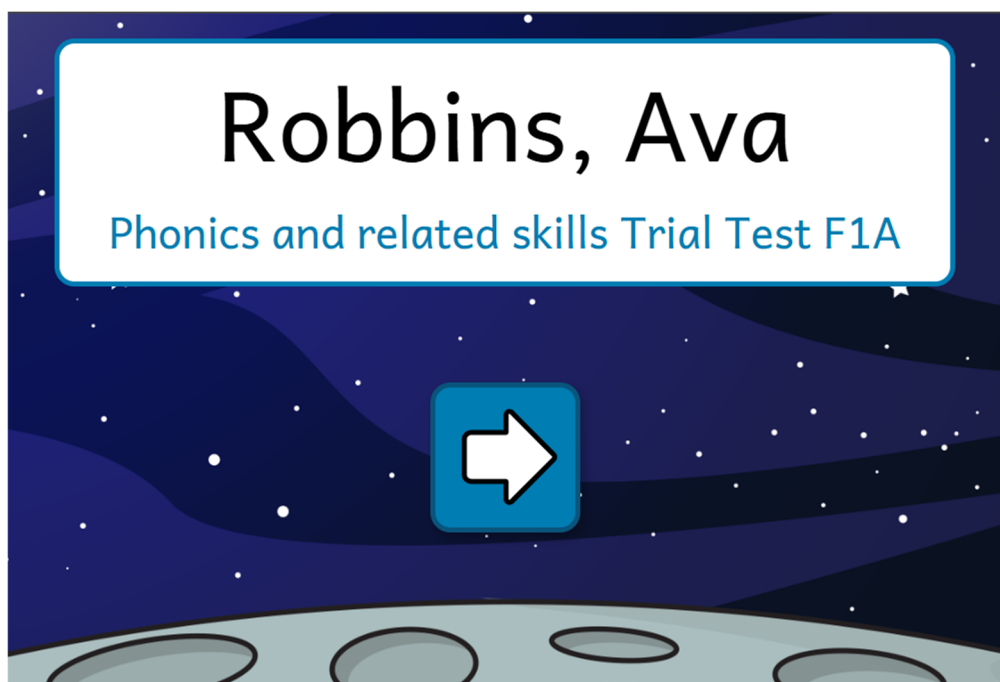
Otherwise, you may have to inspect the devices yourself to check.

Once you have ensured all students are logged in with the correct names, they may open the test.

Say:

*Please click **Phonics and related skills***

The following screen will be shown:



Say:

*We are going to help a furry alien named Flurg by answering some questions. Do your best to answer the questions carefully. Do not spend too long on one question, even if it is hard.*

*When you have got to the end of the questions, please put your hand up and I will come over to you.*

*Before we start, are there any questions?*

Check that the instructions have been understood. You can answer any questions about the test but not the test content.

Say:

*Please put on your headphones, and then tap the arrow to begin. Flurg will tell you what to do next.*

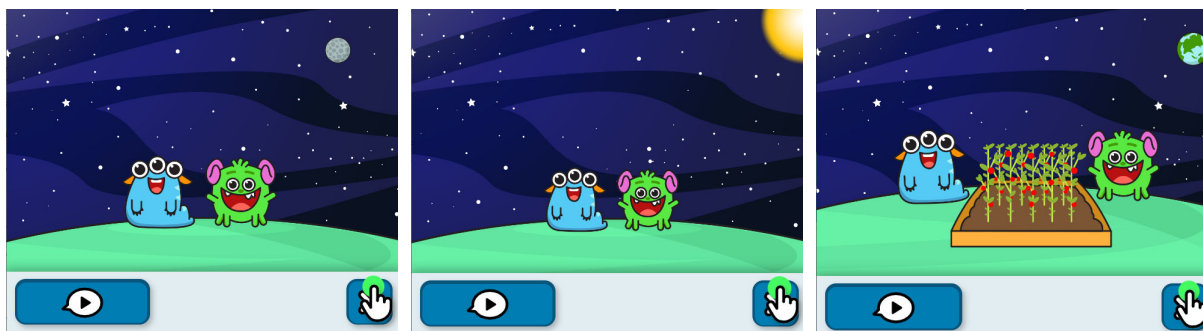
Check that the students have begun their tests.

After 30 minutes, check whether all students have completed the questions. If not, you can allow for additional time for any students who are still working in an engaged manner.

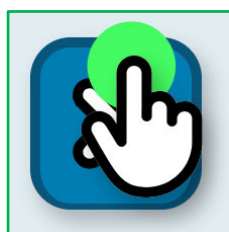
You may need to remind students to put up their hand once they have completed the test, and/or monitor their device screens to see if they have finished.



When a student reaches the end of the test, they will see one of these screens (depending on the test form assigned):



To mark the test as completed, you will need to tap on the cross button:



The student will then be taken back to their page of assigned tests, and the result will now be available to report on within your school's online testing account.

## TROUBLESHOOTING

If you encounter any problems when administering the tests, contact ACER for support:

Phone: 1300 006 577

Email: [school.support@acer.org](mailto:school.support@acer.org)

### Why can't my student log in?

There are several possible causes:

- Logins are case sensitive. Check that the student is entering their username and password correctly.
- Some devices and browsers will automatically capitalise some words, or automatically fill login fields with saved details. The student should be able to overwrite these automatic suggestions by typing their complete details. If the problem persists, check the browser or device settings, or use another web browser.
- Check that the student is on the correct login page.
- If you have a staff login, check that the student's login details are correct by logging in to the account with your staff login details and clicking the student's name on the **Students** page.

### Why is the test not appearing for my student?

The test is not currently assigned to the student. Please contact ACER to assign the test to your student.

### Can I re-open a student's test if they submit it before they are finished?

Yes. If you have a staff login, follow the steps below to re-open a student's test to allow them to continue:

1. Log in to your school's account using your staff login.
2. Click **Students** and locate the student's name in your list.
3. Click the student's name to view their profile and then click the **Tests** tab.
4. Click the dropdown menu next to the test you need to re-open and then click **Re-open test**.

### Can I close a student's test if they forget to submit it?

Yes. If you have a staff login, follow the steps below to close a student's test:

1. Log in to your school's account using your staff login.
2. Click **Students** and locate the student's name in your list. (You will see the unfinished test listed in the **Active tests** column and marked with a pencil icon).
3. Click the check box next to the student's name and then click **Tests > Close unfinished tests**.
4. Select the test you need to close and then click **Close test**.

## GENERATING REPORTS

After your students have completed their test, you can view reports.

The reports for the trial forms should be generated from the Students page of your OARS account by following the steps below:

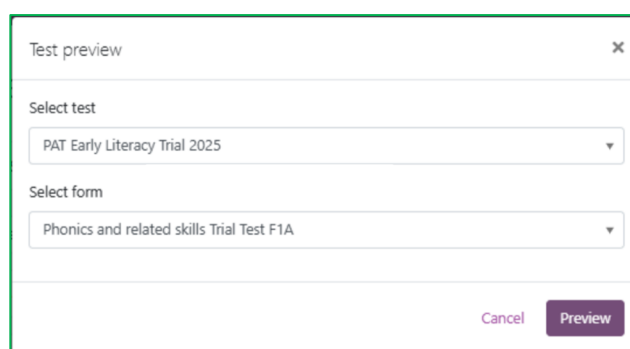
- Log in to your online school account: (<https://oars.acer.edu.au/your-school-name>).
- Go to the Students page
- Select the group of students you want to include in the report (you may want to filter by year level and/or tags)
- Click 'Select all X students'
- Click 'Generate Report'
- Choose 'PAT Early Literacy Trial 2025'
- Choose 'Group Report'
- Choose the test form (e.g., Phonics and related skills Trial Test F1A)
- Specify the time period (optional)
- Click 'Generate Report'
- Click 'View Report'

You can save the report as a spreadsheet by clicking the 'Download' button and choosing 'Table (Excel file)'. You can also click the 'View charts' button and print a chart showing the students' performance, which can be sorted by either question number or the percentage of correct responses to each question.

The trial reports will only show you the raw scores achieved by each student on the test, as well as the percentage of students within the group that responded correctly to each question.

While you will not be able to preview the questions the students were asked from this Group Report, you can do so by using the test preview feature from the 'Students' section:

- Log in to your OARS account
- Go to the Students page
- Click the 'Tests' button
- Choose 'Preview' from the drop-down menu
- Choose 'PAT Early Literacy Trial 2025'
- Choose the test form (e.g., Phonics and related skills Trial Test F1A)
- Click 'Preview'
- You will now see the test as your students saw it



For assistance with generating reports, please contact the ACER School Support team:

Phone: **1300 006 577**

Email: [school.support@acer.org](mailto:school.support@acer.org)